

# D4

Road fence rig  
Rammgeräte Konzept  
Prylmaskin vägräcke

Rev.1



**SPD**  
SCANDINAVIAN PILE DRIVING AB



| English   | Svenska  | Deutsch                                |                        |
|---|--|--|------------------------|
| <b>Base carrier</b>   | <b>Basmaskin, bärare</b>                         | <b>Trägergerät</b>                     | <b>Volvo ECR88</b>     |
| Drive engine  | Motor  | Dieselmotor                            | Volvo D3.4             |
| Emission standards  | Miljöstandard                                    | Abgasvorschrift                        | EU Stage V (5)         |
| Engine output   | Motoreffekt                                      | Motorleistung                          | 78,6 kW                |
| Diesel tank capacity  | Diesel tank volym                                | Inhalt Dieseltank                      | 110 Lit                |
| <b>Hydraulic pump output</b>                                  | <b>Hydraulpumpars effekt</b>                     | <b>Hydraulische Pumpenleistung</b>     |                        |
| Pump 1  | Pump 1   | Pumpe 1                                | 90 Lit/min @ 180 bar   |
| Pump 2  | Pump 2   | Pumpe 2                                | N/A                    |
| Pump 3  | Pump 3   | Pumpe 3                                | N/A                    |
| Pump 4  | Pump 4   | Pumpe 4                                | N/A                    |
| Pump 5  | Pump 5   | Pumpe 5                                | N/A                    |
| Hydraulic tank capacity                                       | Hydraultank volym                                | Inhalt Hydrauliktank                   | 80 Liter               |
| Hydraulic fluids as standard                                  | Hydraulolja fylld som standard                   | Standard-Hydrauliköl                   | Panolin HLP synth      |
| Transport length  | Transportlängd                                   | Länge in Transportstellung             | mm                     |
| Transport width   | Transportbredd                                   | Breite in Transportstellung            | 2.300 mm               |
| Transport height  | Transporthöjd                                    | Höhe in Transportstellung              | 3.010 mm               |
| Transport weight  | Transportvikt                                    | Transportgewicht                       | 13 Ton                 |
| Ground clearance  | Markfrigång                                      | Bodenfreiheit                          | mm                     |
| Travelling speed  | Larvhastighet                                    | Fahrgeschwindigkeit                    | 2,7/5,1 km/h           |
| Traction force  | Larvkraft  | Zugkraft                               | 54,5 kN                |
| <b>Mast</b>   | <b>Mast</b>                                      | <b>Lafette</b>                         | <b>D4</b>              |
| Mast length   | Mastlängd  | Lafettenlänge                          | 5.500 mm std.          |
| Usable cradle stroke (single head)                            | Användbar slaglängd                              | Vorschubweg                            | 4.000 mm               |
| Max. permissible rotation torque for working with rotary head | Max tillåten rotationskraft vid roterande borrar | Max zulässiges Drehmoment am Bohrtrieb | Option                 |
| Feed force  | Matningskraft                                    | Vorschubkraft                          | 80 kN                  |
| Retraction force  | Lyftkraft  | Rückzugkraft                           | 80 kN                  |
| Piling diameter   | Pål diameter                                     | Pfahldurchmesser                       | Ø150 mm - Ø220 mm      |
| Feed speed  | Matningshastighet                                | Vorschubgeschwindigkeit                | 0 - 25 m/min           |
| Retraction speed  | Lyfthastighet                                    | Rückzuggeschwindigkeit                 | 0 - 25 m/min           |
| Clamping and breaking device                                  | Kläm och knäckbord                               | Klemm- und Brechvorrichtung            | Option                 |
| Break out force   | Knäckkraft                                       | Brechmoment                            | Option                 |
| Service winch cat head  | Service vinsch, svängbar                         | Winde, schwenkbar 180°                 | 20 kN                  |
| Remote controls   | Fjärrstyrning                                    | Funkfernsteuerrung                     | Option                 |
| Piling hammers available                                      | Pålningshammare tillgängliga                     | Schlaghammer wahlweise                 | SPD1000                |
| Rotary heads available  | Rotationer tillgängliga                          | Drehbohrtrieb wahlweise                | Option: Eurodrill RH4X |
| <b>Additional equipment</b>                                   | <b>Tillvalsutrustning</b>                        | <b>Zusatzaustattungen</b>              |                        |
| Rotary head   | Rotation   | Drehbohrantriebe                       |                        |
| <b>Recommended area of use</b>                                | <b>Rek. användningsområde</b>                    | <b>Einsatzgebiet</b>                   |                        |
| Hole punching for road fence                                  | Prylning för vägräcken                           |  |                        |

We reserve the right for possible misspellings of technical data, and that we may change technical data without further notice.

## Volvo ECR88-D4

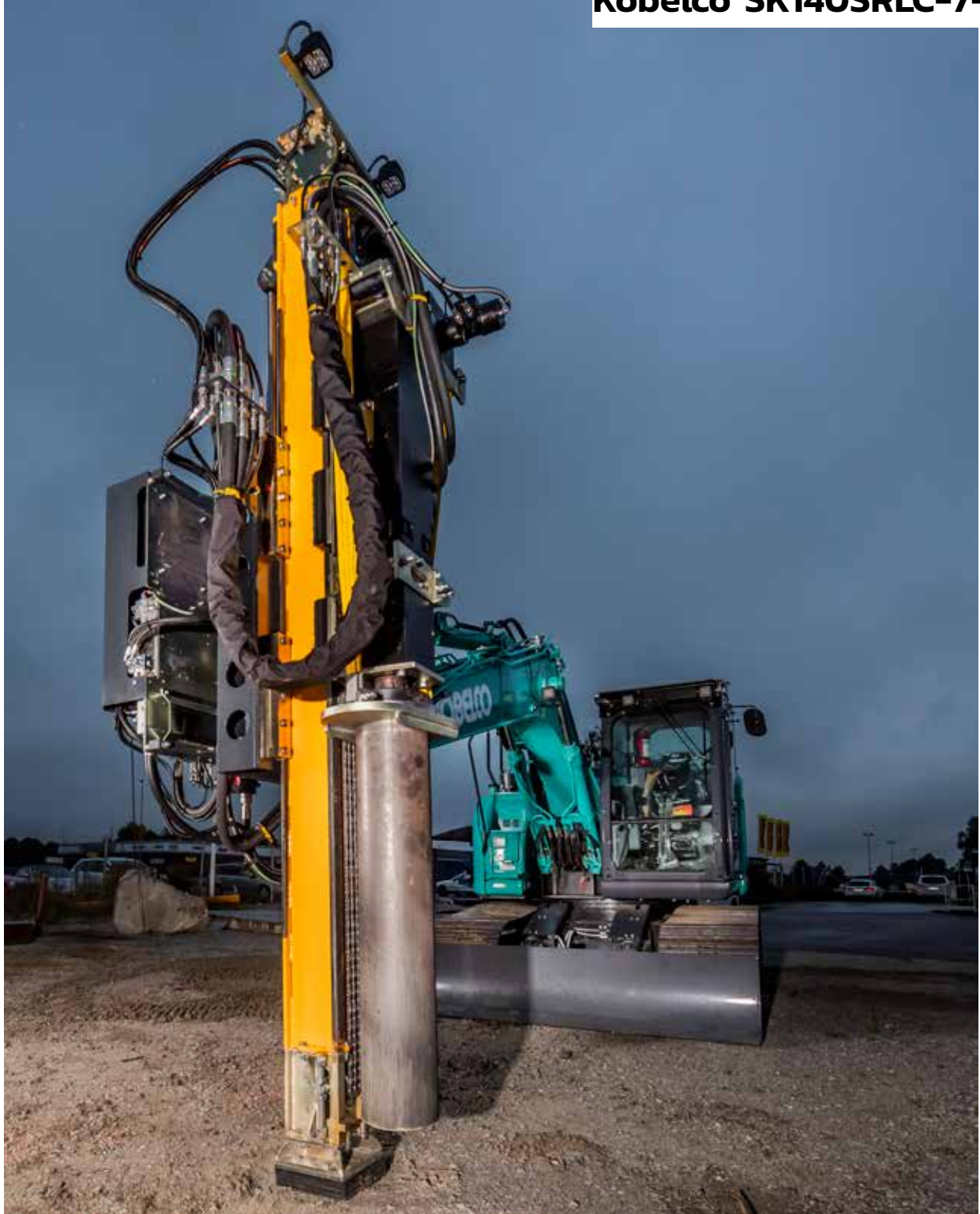


| English   | Svenska  | Deutsch                                |                            |
|---|--|--|----------------------------|
| <b>Base carrier</b>   | <b>Basmaskin, bärare</b>                           | <b>Trägergerät</b>                     | <b>Kobelco SK140SRLC-7</b> |
| Drive engine  | Motor  | Dieselmotor                            | Isuzu 4JJ1XDDV A01         |
| Emission standards  | Miljöstandard                                      | Abgasvorschrift                        | EU Stage V (5)             |
| Engine output   | Motoreffekt  | Motorleistung                          | 86 kW                      |
| Diesel tank capacity  | Diesel tank volym                                  | Inhalt Dieseltank                      | 186 Lit                    |
| <b>Hydraulic pump output</b>                                  | <b>Hydraulpumpars effekt</b>                       | <b>Hydraulische Pumpenleistung</b>     |                            |
| Pump 1  | Pump 1   | Pumpe 1                                | 142 Lit/min                |
| Pump 2  | Pump 2   | Pumpe 2                                | 142 Lit/min                |
| Pump 3  | Pump 3   | Pumpe 3                                | 66 Lit/min                 |
| Pump 4  | Pump 4   | Pumpe 4                                | N/A                        |
| Pump 5  | Pump 5   | Pumpe 5                                | N/A                        |
| Hydraulic tank capacity                                       | Hydraultank volym                                  | Inhalt Hydrauliktank                   | 89,9 Liter                 |
| Hydraulic fluids as standard                                  | Hydraulolja fylld som standard                     | Standard-Hydrauliköl                   | Panolin HLP synth          |
| Transport length  | Transportlängd                                     | Länge in Transportstellung             | mm                         |
| Transport width   | Transportbredd                                     | Breite in Transportstellung            | 2.590 mm                   |
| Transport height  | Transporthöjd                                      | Höhe in Transportstellung              | 2.800 mm                   |
| Transport weight  | Transportvikt                                      | Transportgewicht                       | 17 Ton                     |
| Ground clearance  | Markfrigång  | Bodenfreiheit                          | mm                         |
| Travelling speed  | Larvhastighet                                      | Fahrgeschwindigkeit                    | 5.6/3.4 km/h (high/low)    |
| Traction force  | Larvkraft  | Zugkraft                               | kN                         |
| <b>Mast</b>   | <b>Mast</b>  | <b>Lafette</b>                         | <b>D4</b>                  |
| Mast length   | Mastlängd  | Lafettenlänge                          | 5.500 mm                   |
| Usable cradle stroke (single head)                            | Användbar slaglängd                                | Vorschubweg                            | 4.000 mm                   |
| Max. permissible rotation torque for working with rotary head | Max tillåten rotationskraft vid roterande borrarng | Max zulässiges Drehmoment am Bohrtrieb | Option                     |
| Feed force  | Matningskraft                                      | Vorschubkraft                          | 80 kN                      |
| Retraction force  | Lyftkraft  | Rückzugkraft                           | 80 kN                      |
| Piling diameter   | Pål diameter                                       | Pfahldurchmesser                       | Ø150 mm - Ø220 mm          |
| Feed speed  | Matningshastighet                                  | Vorschubgeschwindigkeit                | 0 - 25 m/min               |
| Retraction speed  | Lyfthastighet                                      | Rückzuggeschwindigkeit                 | 0 - 25 m/min               |
| Clamping and breaking device                                  | Kläm och knäckbord                                 | Klemm- und Brechvorrichtung            | Option                     |
| Break out force   | Knäckkraft   | Brechmoment                            | Option                     |
| Service winch cat head  | Service vinsch, svängbar                           | Winde, schwenkbar 180°                 | 20 kN                      |
| Remote controls   | Fjärrstyrning                                      | Funkfernsteuerrung                     | Option                     |
| Piling hammers available                                      | Pålningshammare tillgängliga                       | Schlaghammer wahlweise                 | SPD1000                    |
| Rotary heads available  | Rotationer tillgängliga                            | Drehbohrtrieb wahlweise                | Option: RH4X               |
| <b>Additional equipment</b>                                   | <b>Tillvalsutrustning</b>                          | <b>Zusatzaustattungen</b>              |                            |
| Rotary head   | Rotation   | Drehbohrantriebe                       |                            |
| <b>Recommended area of use</b>                                | <b>Rek. användningsområde</b>                      | <b>Einsatzgebiet</b>                   |                            |
| Punching holes for road fence                                 | Prylning för väggräcken                            |  |                            |

We reserve the right for possible misspellings of technical data, and that we may change technical data without further notice.



## Kobelco SK140SRLC-7-D4





# SPD

SCANDINAVIAN PILE DRIVING AB



+46 (0)224-138 10  
info@spd.se  
www.spd.se

Fridhemsgatan 16  
733 39 Sala, SWEDEN  
Org.nr: 556653-4565





Remote control is standard

# SPD

SCANDINAVIAN PILE DRIVING AB

Fridhemsgatan 16  
733 39 Sala, SWEDEN  
Org.nr: 556653-4565

+46 (0)224-138 10  
[info@spd.se](mailto:info@spd.se)  
[www.spd.se](http://www.spd.se)